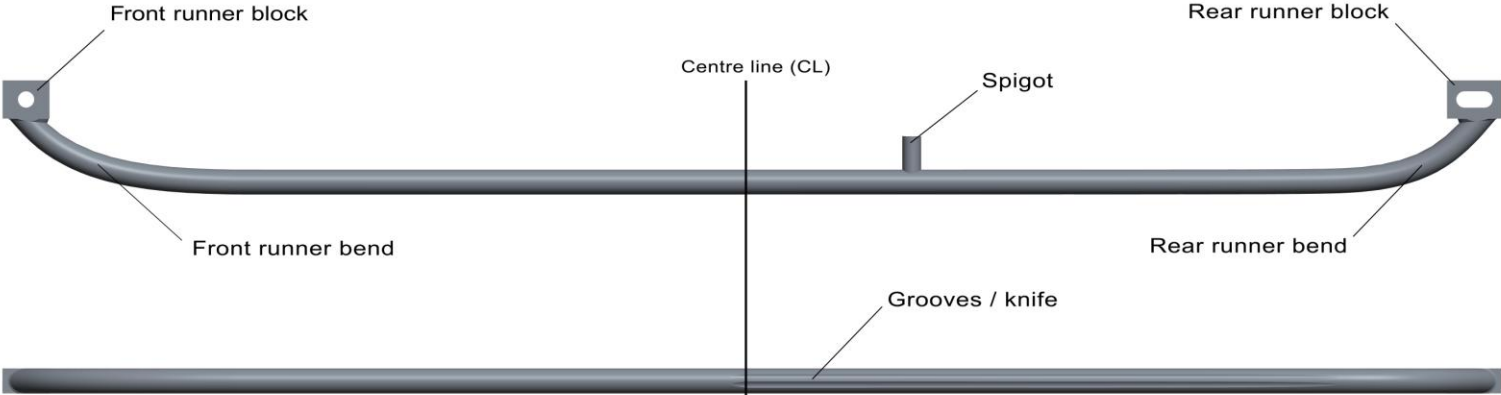




BROMLEY
athlete engineered technology

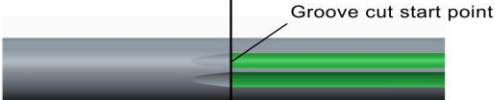
bromleysports.com

Bromley Runner Design Guide

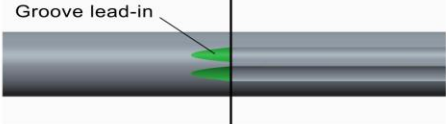


Enlarged views of the grooves/knife features:

The groove cut start point is measured from the CL. The 'standard' groove cut start point is on the CL



The groove 'lead-in' extends forward of the groove cut start point. The 'standard' lead in length is 8-10mm.

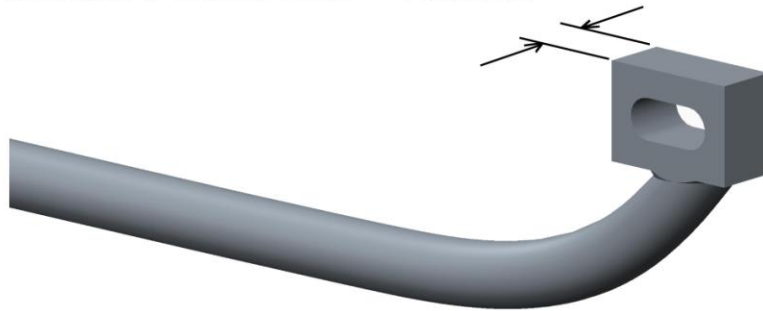


Centre line (CL)
 Note: The Centre Line (CL) lies on the mid point of the runner length.



Block Size
Standard size = 16.0mm

Standard Block Size = 16.0mm



BROMLEY

Runner Bend Style - Two Options

Bromley Original Bend



Bromley Alternative Bend



Preset Groove Designs

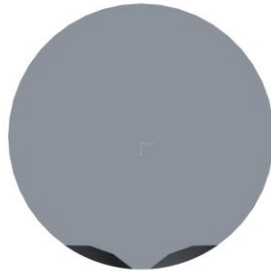
Original



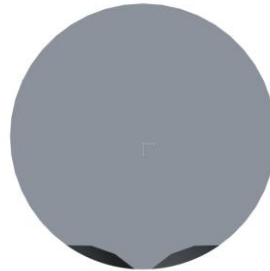
Imitation



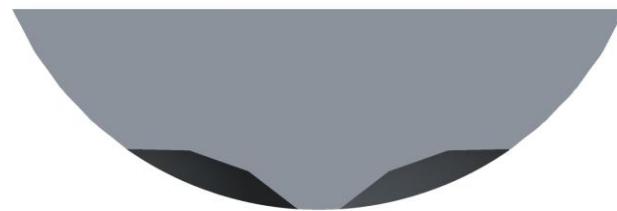
Super Imitation



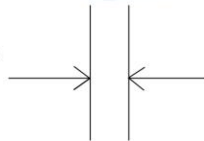
Big Wheel



Super Big Wheel

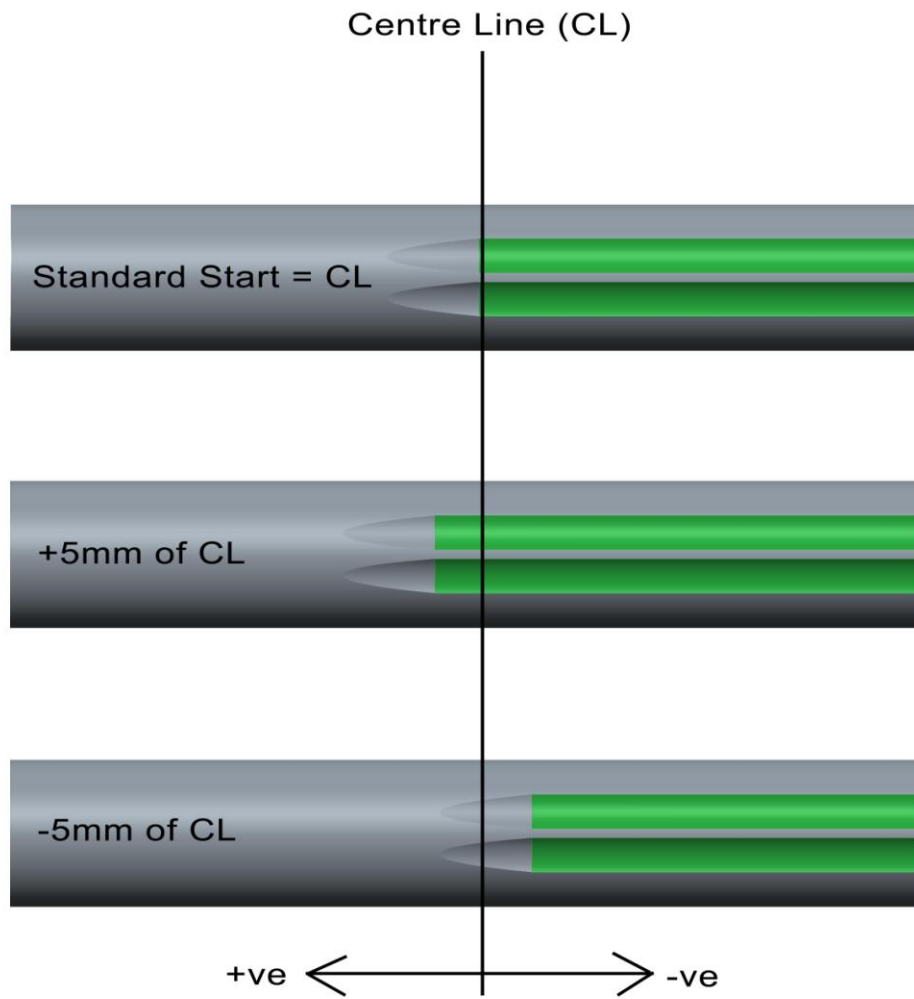


The 'knife edge' or 'spine' is the portion of the runner left between the two grooves after machining. This 'knife edge' interacts with the ice surface in order to create stability.



Groove Cut Start

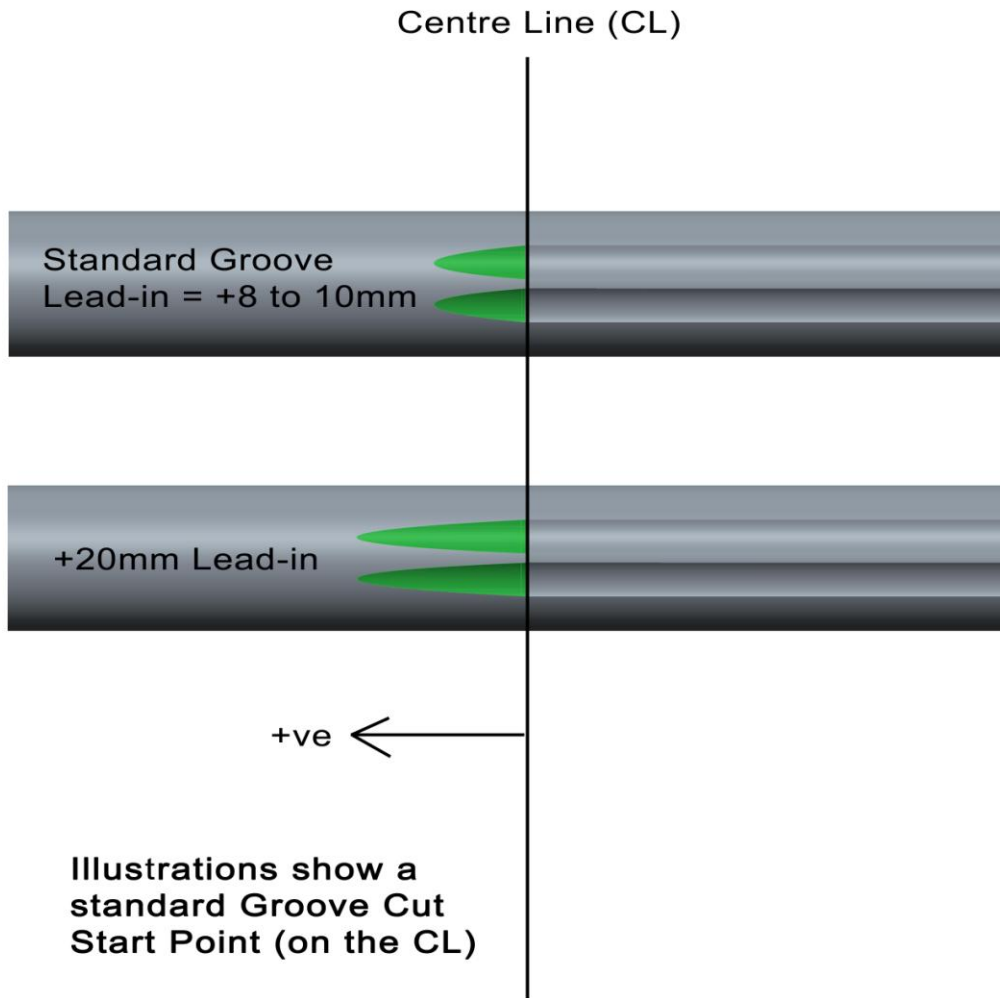
Examples:



BROMLEY
athlete engineered technology

Groove Lead-in Length

Examples:



BROMLEY
athlete engineered technology

Copyright

Bromley Technologies Ltd

Advanced Manufacturing Park

Technology Centre

Brunel Way

Catcliffe

Rotherham

S60 5WG

t +44 (0)114 321 6187

f +44 (0)114 321 6305

www.bromleysport.com